

TRAFFIC CONTROL SYMBOL LEGEND

CLASS 1 BARRICADES

TRAFFIC DRUM

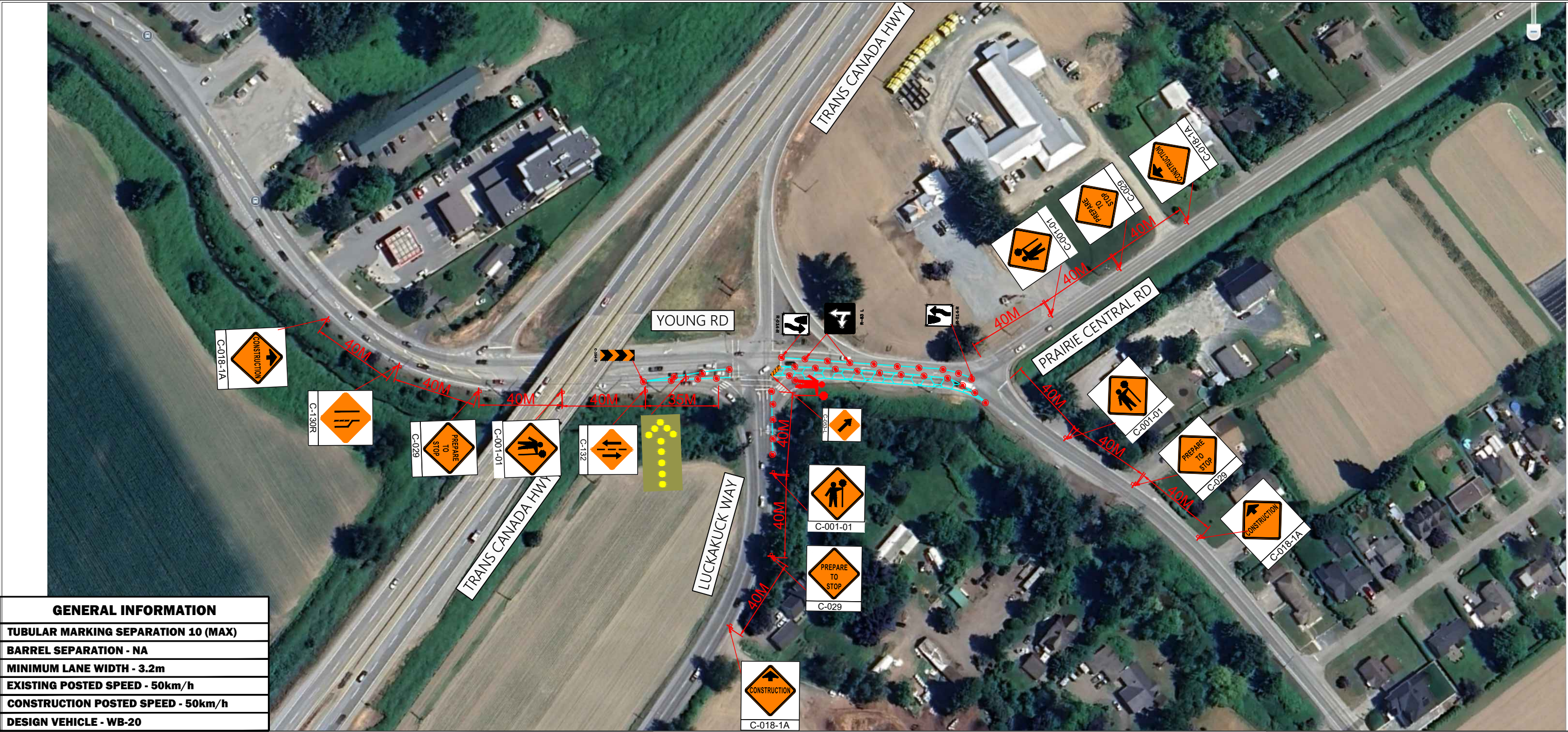
TRAFFIC SIGNAGE

CLOSURE AREA

TRAFFIC CONTROL PERSONNEL

BUS STOP

PARKING REMOVAL



| GENERAL INFORMATION |
|-------------------------------------|
| TUBULAR MARKING SEPARATION 10 (MAX) |
| BARREL SEPARATION - NA |
| MINIMUM LANE WIDTH - 3.2m |
| EXISTING POSTED SPEED - 50km/h |
| CONSTRUCTION POSTED SPEED - 50km/h |
| DESIGN VEHICLE - WB-20 |

| GENERAL NOTES | | REV | DESCRIPTION | DATE | INITIAL | ALL ROADS CONSTRUCTION | | DWG No. | 03 - EB Lane Shift on Young Road | |
|---|--|-----|------------------------|----------|---------|------------------------|----------------------------|---|----------------------------------|--|
| 1. Hours of operation: 7:30am-7:30pm 8pm-6am | | 0 | ISSUED FOR INFORMATION | 05.16.25 | AME | PROJECT: | YOUNG RD, CHILLIWACK, B.C. | SCALE: | | |
| 2. Traffic Plan based on a 50km/h speed zone | | | | | | CLIENT: | | 2191 GREYLYNN CRESCENT, NORTH VANCOUVER, B.C. | KOPER & COMPANY TRAFFIC SERVICES | |
| 3. Traffic specifications based on the MOTI Traffic Management Manual for Work on Roadways (2020) | | | | | | | | | | |
| 4. Existing laning alignment to be reinstated at the end of each shift | | | | | | | | | | |
| 5. Any signs that conflict with approved traffic plan will be covered or removed | | | | | | | | | | |
| 6. Completion of Civil works | | | | | | | | | | |
| 7. Onsite Contact: TBD | | | | | | | | | | |
| 8. TCP's to utilize radios when site lines cannot be made | | | | | | | | | | |
| 9. CMBC to be contacted prior to work commencing | | | | | | | | | | |
| 10. Contractor & TCP's to follow WSBC Part 18 regulation | | | | | | | | | | |

REVIEWED

2025-06-05 3:44:08 PM

TRAFFIC CONTROL SYMBOL LEGEND

CLASS 1 BARRICADES

CLOSURE AREA

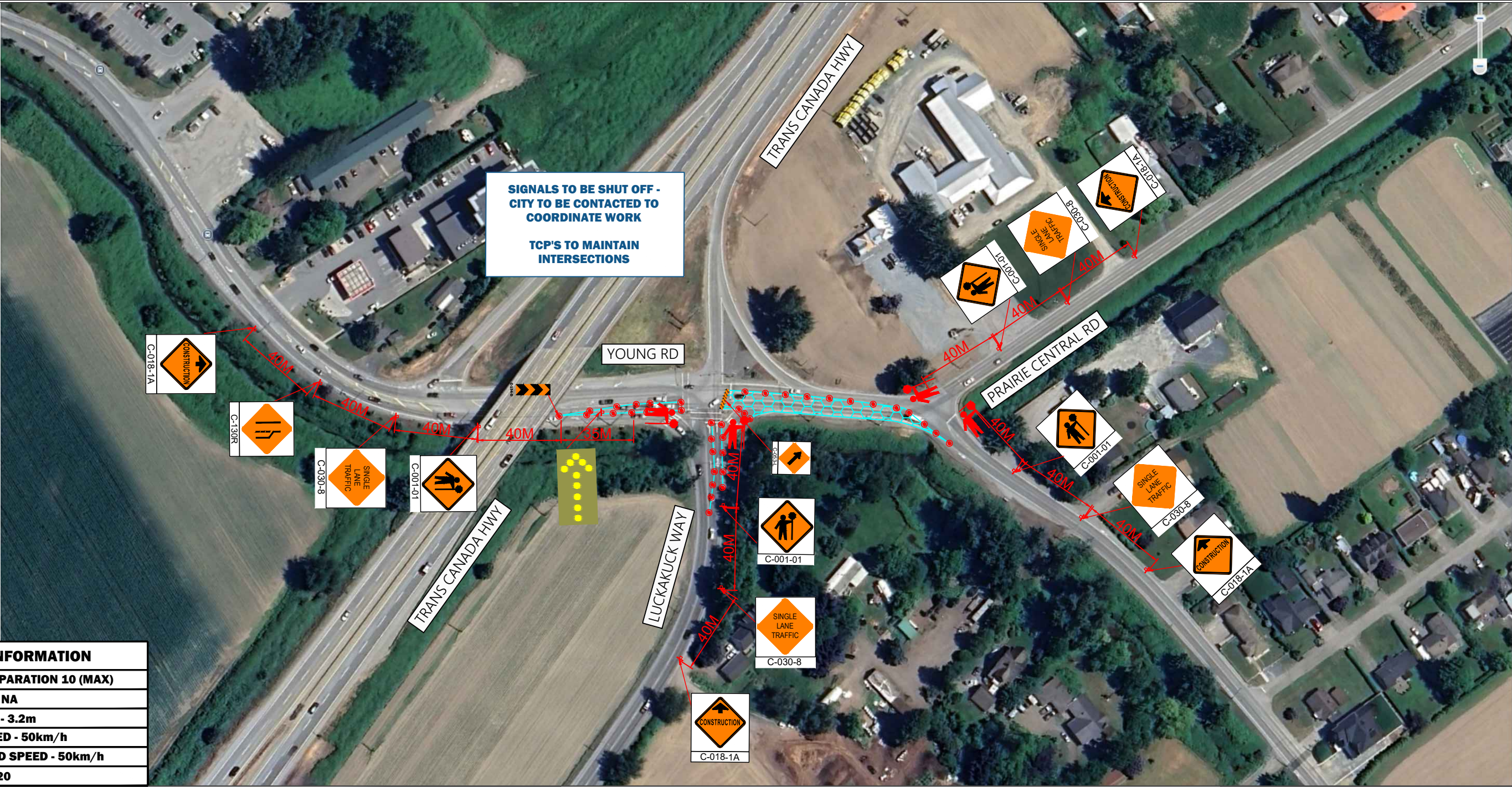
TRAFFIC CONTROL PERSONNEL

TRAFFIC DRUM

TRAFFIC SIGNAGE

BUS STOP

PARKING REMOVAL



| GENERAL INFORMATION |
|-------------------------------------|
| TUBULAR MARKING SEPARATION 10 (MAX) |
| BARREL SEPARATION - NA |
| MINIMUM LANE WIDTH - 3.2m |
| EXISTING POSTED SPEED - 50km/h |
| CONSTRUCTION POSTED SPEED - 50km/h |
| DESIGN VEHICLE - WB-20 |

| GENERAL NOTES | | REV | DESCRIPTION | DATE | INITIAL | ALL ROADS CONSTRUCTION | | DWG No. | 04 - EB SLAT on Young Road | |
|---|--|-----|------------------------|----------|---------|------------------------|----------------------------|---|----------------------------------|--|
| 1. Hours of operation: 7:30am-7:30pm 8pm - 6am | | 0 | ISSUED FOR INFORMATION | 05.16.25 | AME | PROJECT: | YOUNG RD, CHILLIWACK, B.C. | SCALE: | | |
| 2. Traffic Plan based on a 50km/h speed zone | | | | | | CLIENT: | | 2191 GREYLYNN CRESCENT, NORTH VANCOUVER, B.C. | KOPER & COMPANY TRAFFIC SERVICES | |
| 3. Traffic specifications based on the MOTI Traffic Management Manual for Work on Roadways (2020) | | | | | | | | | | |
| 4. Existing laning alignment to be reinstated at the end of each shift | | | | | | | | | | |
| 5. Any signs that conflict with approved traffic plan will be covered or removed | | | | | | | | | | |
| 6. Completion of Civil works | | | | | | | | | | |
| 7. Onsite Contact: TBD | | | | | | | | | | |
| 8. TCP's to utilize radios when site lines cannot be made | | | | | | | | | | |
| 9. CMBC to be contacted prior to work commencing | | | | | | | | | | |
| 10. Contractor & TCP's to follow WSBC Part 18 regulation | | | | | | | | | | |

REVIEWED
2025-06-05 3:37:07 PM

TRAFFIC CONTROL SYMBOL LEGEND

CLASS 1 BARRICADES

TRAFFIC DRUM

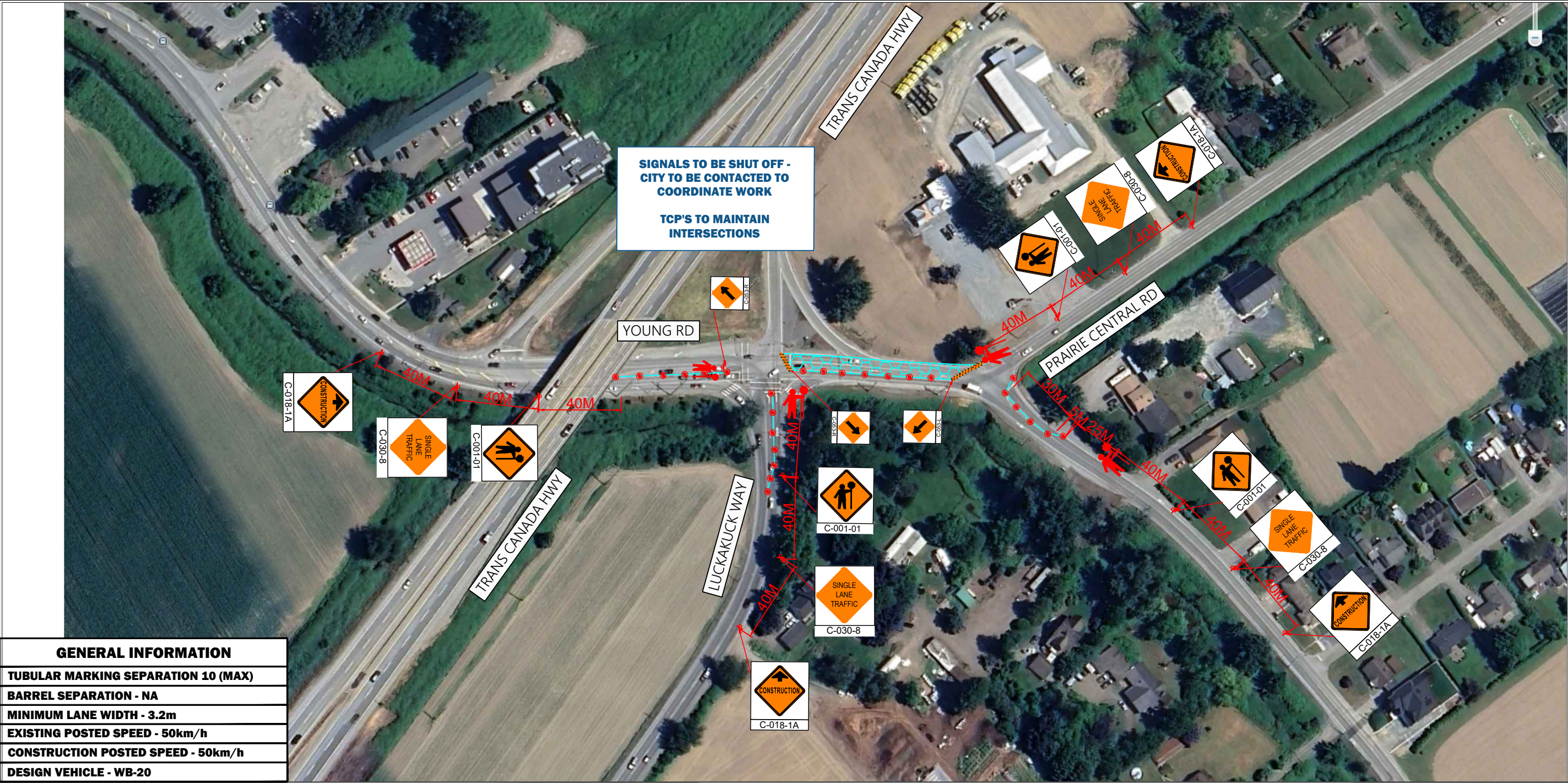
CLOSURE AREA

TRAFFIC SIGNAGE

TRAFFIC CONTROL PERSONNEL

BUS STOP

PARKING REMOVAL



| GENERAL INFORMATION |
|-------------------------------------|
| TUBULAR MARKING SEPARATION 10 (MAX) |
| BARREL SEPARATION - NA |
| MINIMUM LANE WIDTH - 3.2m |
| EXISTING POSTED SPEED - 50km/h |
| CONSTRUCTION POSTED SPEED - 50km/h |
| DESIGN VEHICLE - WB-20 |

| GENERAL NOTES | | REV | DESCRIPTION | DATE | INITIAL | ALL ROADS CONSTRUCTION | | DWG No. | 05 - WB SLAT on Young Road | |
|---|--|-----|------------------------|----------|---------|------------------------|----------------------------|---|----------------------------------|--|
| 1. Hours of operation: 7:30am-7:30pm-8pm-6am | 10. Contractor & TCP's to follow WSBC Part 18 regulation | 0 | ISSUED FOR INFORMATION | 05.16.25 | AME | PROJECT: | YOUNG RD, CHILLIWACK, B.C. | SCALE: | | |
| 2. Traffic Plan based on a 50km/h speed zone | | | | | | CLIENT: | | 2191 GREYLYNN CRESCENT, NORTH VANCOUVER, B.C. | KOPER & COMPANY TRAFFIC SERVICES | |
| 3. Traffic specifications based on the MOTI Traffic Management Manual for Work on Roadways (2020) | | | | | | | | | | |
| 4. Existing laning alignment to be reinstated at the end of each shift | | | | | | | | | | |
| 5. Any signs that conflict with approved traffic plan will be covered or removed | | | | | | | | | | |
| 6. Completion of Civil works | | | | | | | | | | |
| 7. Onsite Contact: TBD | | | | | | | | | | |
| 8. TCP's to utilize radios when site lines cannot be made | | | | | | | | | | |
| 9. CMBC to be contacted prior to work commencing | | | | | | | | | | |